



# OIE general principles and future challenge to develop outcome based standards

Tomasz Grudnik - OIE International Trade Department

Training course on “Animal Welfare in pig production”

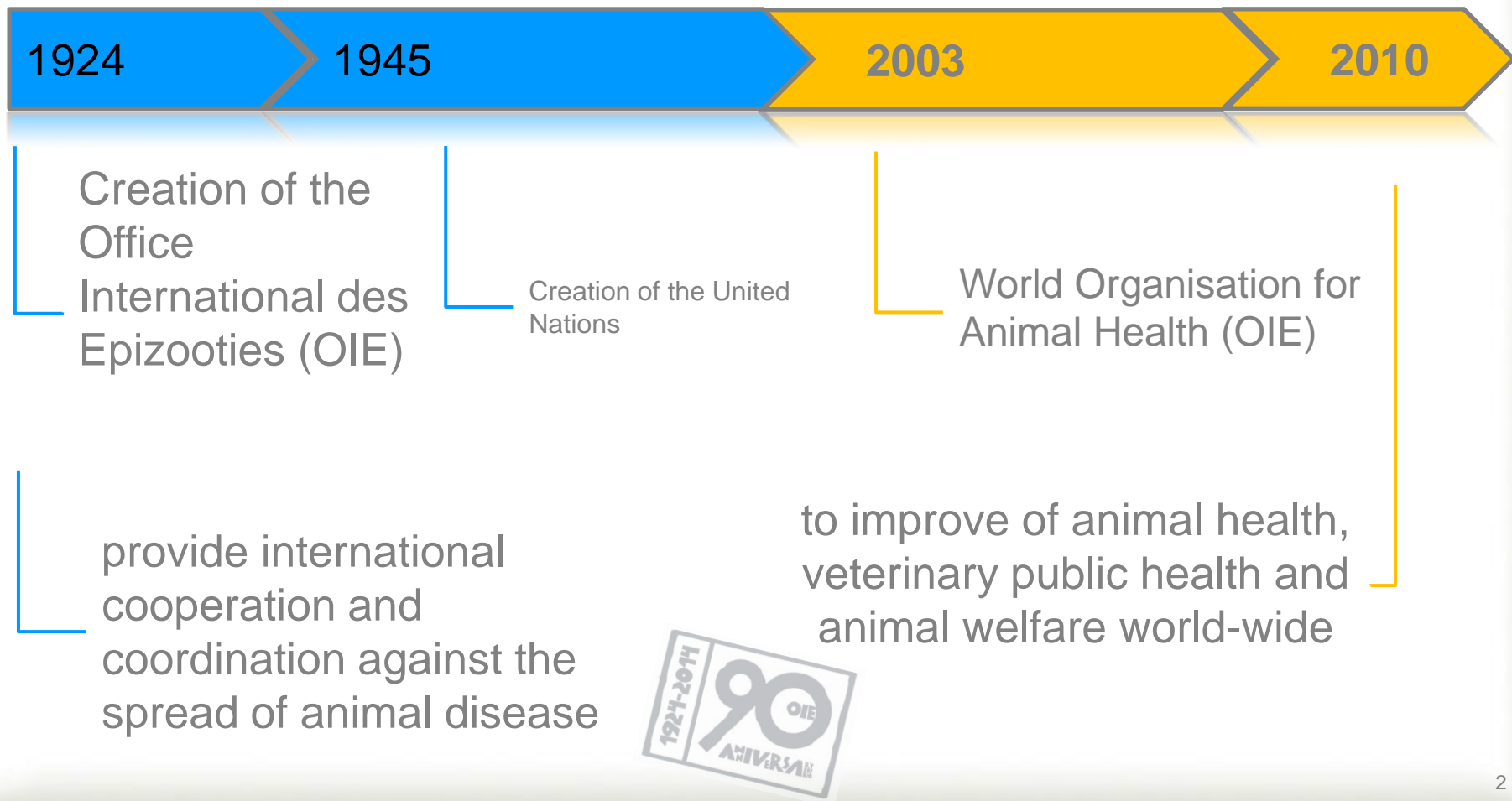
Herning, Denmark, 14 – 17 October, 2014



**WORLD ORGANISATION FOR ANIMAL HEALTH**

*Protecting animals, preserving our future*

# World Organisation for Animal Health



# World Organisation for Animal Health

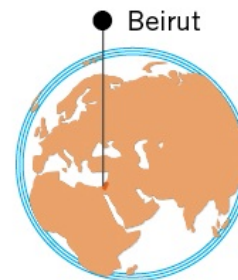
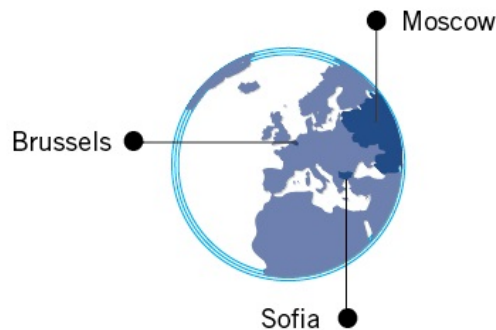
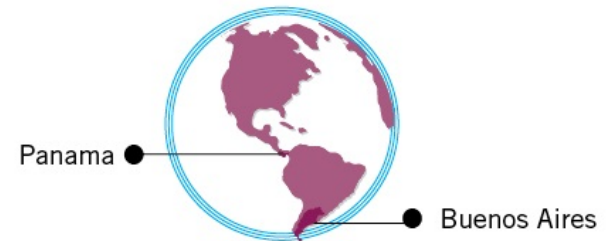
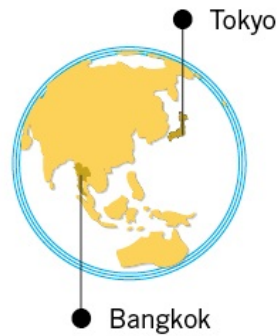
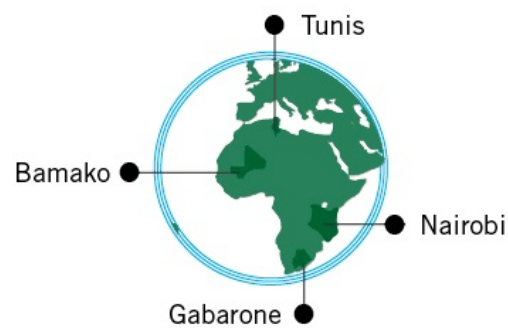


## 178 Member Countries

Africa 52 – Americas 30 – Asia, the Far East and Oceania 35  
Europe 53 – Middle-East 20



# Regional and Sub-Regional representations



# OIE mission



Scientific  
information

International  
solidarity

Transparency



Sanitary safety

Promotion of  
Veterinary Services

Food Safety and  
Animal Welfare



# Role of OIE in Animal Welfare



- Historic role of the OIE in protecting animal health
- Animal health is a key component of animal welfare
- OIE Member Countries mandated the organisation to take the lead internationally on animal welfare



# OIE Objectives on Animal Welfare



- Contributing to the improvement of animal welfare globally via:
  - development of science-based standards and
  - support and technical advice to OIE Members to help them towards implementation of the standards
  - Promotion of education and research



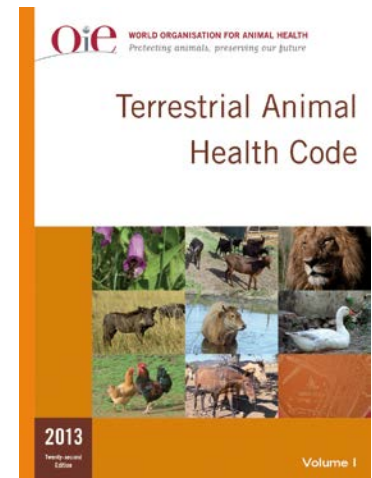
# OIE Terrestrial Animal Health Code

## Available standards on animal welfare



### Section 7. Animal welfare

- 7.1 Introduction to the recommendations for animal welfare
- 7.2 Transport of animals by land
- 7.3 Transport of animals by sea
- 7.4 Transport of animals by air
- 7.5 Slaughter of animals
- 7.6 Killing of animals for disease control purposes
- 7.7 Control of stray dog populations.
- 7.8 Use of animals in research and education
- 7.9 Animal welfare and beef cattle production systems
- 7.10 Animal welfare and broiler chicken production systems



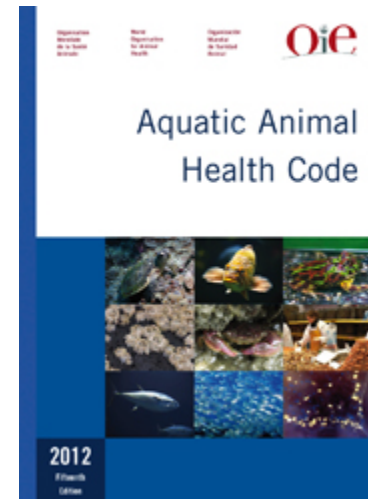


# Aquatic Animal Health Code

## Available standards on animal welfare



- Introduction to recommendations for the welfare of farmed fish
- Welfare of farmed fish during transport
- Welfare aspects of stunning and killing of farmed fish for human consumption
- Killing of farmed fish for disease control purposes



(<http://www.oie.int/en/international-standard-setting/aquatic-code/access-online/>)



# OIE Guiding principles for animal welfare



- That there is a critical relationship between animal health and *animal welfare*
- That the internationally recognised 'five freedoms' and 'three Rs' providing valuable guidance.
- That the scientific assessment of *animal welfare* involves diverse elements which need to be considered together.
- That the use of *animals* (*i.e in* agriculture, education and research), makes a major contribution to the wellbeing of people.
- That the use of *animals* carries with it an ethical responsibility to ensure the *welfare* of such *animals* to the greatest extent practicable
- That improvements in farm *animal welfare* can often improve productivity and food safety,
- That equivalent outcomes based criteria should be the basis for comparison of *animal welfare* standards.



# General principles for the welfare of animals in livestock production (Art 7.1.4)



- Genetic selection take into account the health and welfare of animals
- Suited to the local climate and able to adapt and physical environment
- Physical environment allows comfort and performance of natural behavior
- Social grouping management
- Air quality, temperature and humidity for housed animals support good animal health and allows natural methods of thermo-regulation



# General principles for the welfare of animals in livestock production (Art 7.1.4)



- Access to feed and water, suited to age and needs
- Good management practices to control and prevent diseases and parasites
- Painful procedures, when cannot be avoided, the resulting pain should be managed to the extent that available methods allow
- Positive relationship between humans and animals
- Sufficient skill and knowledge of owners and handlers

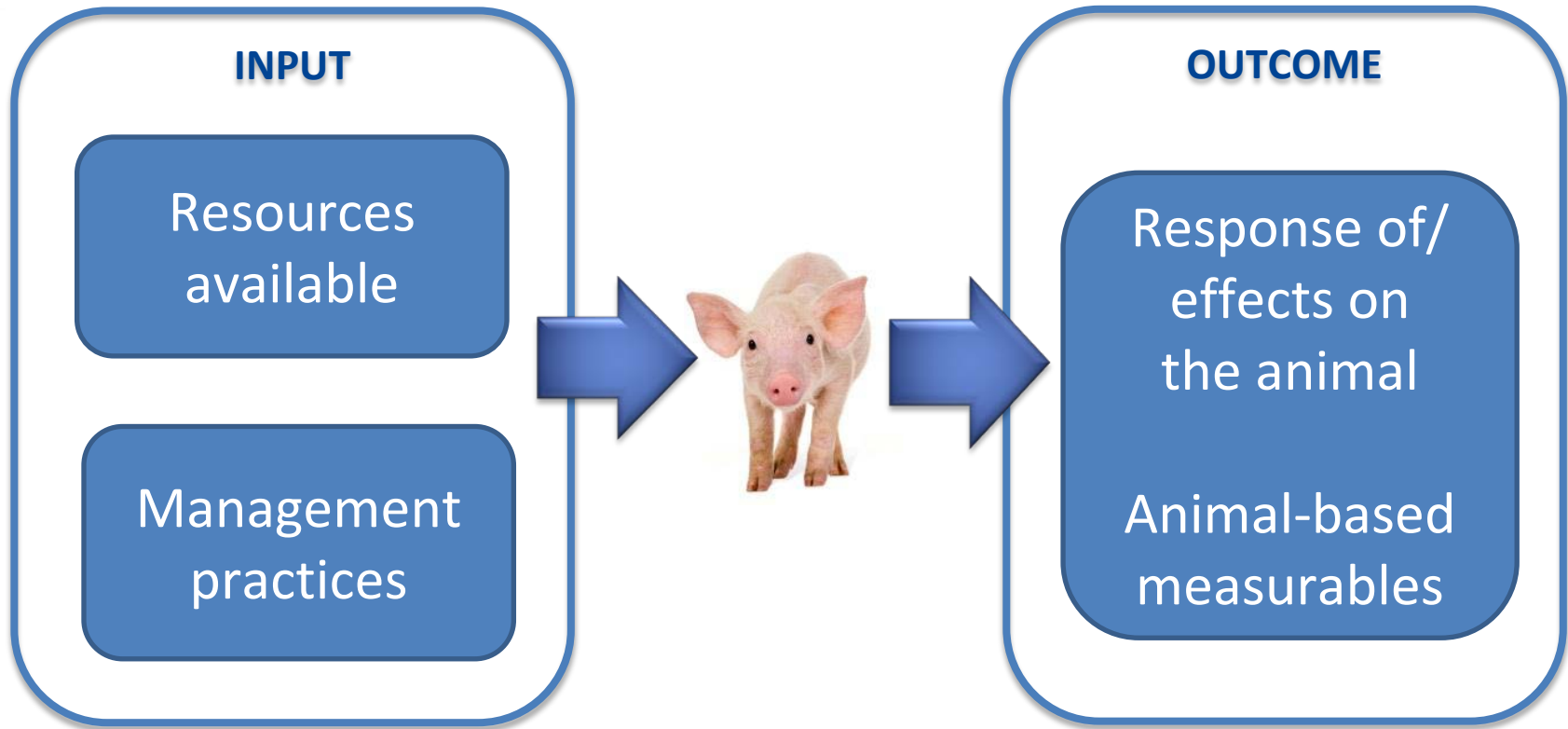






photo courtesy of ebeyfarm.blogspot.com





# Scientific basis for OIE recommendations



## Measures of animal welfare:

- degree of impaired functioning associated with injury, disease, and malnutrition.
- animals' needs and affective states such as hunger, pain and fear, often by measuring the strength of animals' preferences, motivations and aversions.
- physiological, behavioural and immunological changes or effects in response to various challenges.

Such measures can lead to criteria and indicators that help to evaluate how different methods of managing animals influence their welfare.



# Activities supporting implementation of OIE standards



- Capacity building activities:
  - Animal Welfare National Focal Point Seminars
  - Improved Animal Welfare Programme
- Global Animal Welfare Conferences:
  - Paris, 2004
  - Cairo, 2008
  - Kuala Lumpur, 2012
  - Santiago, 2016





# Activities supporting implementation of OIE standards



- Regional Animal Welfare Strategies (RAWS)
  - 1<sup>st</sup> RAWS - Asia, Far East and Oceania
  - other regions / sub-regions: Americas, Europe, Middle east and Africa are developing strategies
  - OIE Platform on Animal Welfare for Europe



**OIE Platform**  
on Animal Welfare  
for Europe



# OIE animal welfare activities

- Production systems

Dairy cattle (for comments of Member countries)

- Welfare of working equids



- Natural disaster risk reduction and management in relation to animal health and welfare



# Thank you for your attention!



**WORLD ORGANISATION FOR ANIMAL HEALTH**  
*Protecting animals, preserving our future*